

Evaluation of indicators measuring in-patient management of alcohol withdrawal

Lambert-Evans S., Morin S., Gloanec M., Capuano F., Loirat P., Minvielle E.



- **COMPAQH** (coordinated by the French National Institute for Medical Research (INSERM) and supported by the French Ministry of Health and the National Health Authority (HAS) **develops quality indicators since 2003**

Methods

- 7 phases



- **Test 1 assesses** staff availability, understanding and participation, data accessibility, initial assessment of relevance.
- **15/20 hospitals**
60 randomly selected patients files (hospitalized for longer than 24 hours)

1

Quality indicators « in-patient management of alcohol withdrawal »

- QI 1. Context of alcohol withdrawal
- QI 2. Monitoring during the first 48 hours of hospitalisation; blood pressure, respiratory rate, pulse, neurological state.
- QI 3. Treatment tapering modalities with benzodiazepines.
- QI 4. Patient hydration
- QI 5. Preventive vitamin therapy.
- QI 6. Discharge report

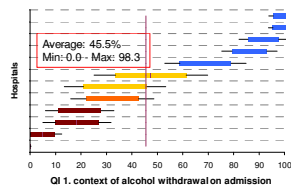
2

Results

Relevance :

The six QIs showed :

- **heterogeneity** across hospitals
- **room for improvement.**



Feasibility :

- Staff availability, understanding of the set of indicators, and data accessibility ++.
- Problem of definition of the population.

Conclusion

The five indicators will be submitted to a 2nd test including a few modifications:

- A more precise definition of the population.
- Identification of concurrent addictions (tobacco, cannabis)

3